



GRANDI THERM

Innovations

∅	box/ pack
20x3,4	100m/25pc
25x4,2	60m/15pc
32x5,4	40m/10pc
40x5,9	20m/5pc
50x7,4	20m/5pc
63x8,9	12m/3pc

**PP-RCT
PN20 (4 m/1 pc)**

**PP-RCT BAZALT
PN 20 (test PN 25)**

**PP-RCT/Al/PP-RCT
composite (4 m/1 pc)**


Elbow 90°



Ø	20	25	32	40	50	63	75	90	110
box/ pack	400/ 50	200/ 50	100/ 25	72/ 15	45/ 9	24/ 4	24/ 4	12/ 12	6/ 6

Elbow 45°



Ø	20	25	32	40	50	63	75	90	110
box/ pack	500/ 50	250/ 50	150/ 25	90/ 15	45/ 9	32/ 4	24/ 24	10/ 10	10/ 10

Coupling



Ø	20	25	32	40	50	63	75	90	110
box/ pack	600/ 100	350/ 50	200/ 25	160/ 32	75/ 15	48/ 16	60/ 60	27/ 27	18/ 18

Reducing coupling



Ø	box/ pack
25x20	400/100
32x20	300/100
32x25	250/50
40x20	160/20
40x25	160/20
40x32	120/15
50x20	105/21
50x25	105/21
50x32	90/15

Ø	box/ pack
50x40	72/12
63x20	60/10
63x25	60/10
63x32	60/10
63x40	60/10
63x50	48/8
75x40	100
50x25	80
75x50	80

Ø	box/ pack
75x63	60
90x40	42
90x50	42
90x63	42
90x75	28
110x50	22
110x63	22
110x75	22
110x90	22

Reducing tee



Ø	box/ pack
25x20x25	200/50
32x20x32	100/20
32x25x32	100/20
40x20x40	96/16
40x25x40	96/16
40x32x40	72/9
50x20x50	60/15
50x25x50	50/10
50x32x50	45/15

Ø	box/ pack
50x40x50	36/12
63x20x63	36/6
63x25x63	36/6
63x32x63	36/6
63x40x63	36/6
63x50x63	24/6
75x32x75	34
75x40x75	34
75x50x75	27

Ø	box/ pack
75x63x75	25
90x40x90	15
90x50x90	15
90x63x90	12
90x75x90	12
110x63x110	9
110x75x110	8
110x90x110	8

Equaltee



Ø	20	25	32	40	50	63	75	90	110
box/ pack	250/ 50	150/ 25	80/ 20	60/ 15	30/ 15	20/ 10	20	12	6

Plug



Ø	20	25	32	40	50	63	75	90
box/ pack	1000	500	350	180/ 30	120/ 30	60/ 12	80	48

Clamp



Ø	20	25	32	40	50	63
box/ pack	800/ 100	600/ 100	500/ 100	200/ 50	125/ 25	100/ 25

Dual clamp



Ø	20	25
box/ pack	350/ 50	250/ 50

Wallsetbottom



Ø	20x1/2
box/ pack	ПОД заказ

Wall - mountedentrancekit



Ø	20x1/2
box/ pack	40

Plastic throat with cap nut



Ø	20x3/4	25x1	32x5/4
box/ pack	100/ 25	80/ 20	50/ 25

The transition with Union nut



Ø	20x1/2	20x3/4
box/ pack	200/ 20	100/ 20

Cross



Ø	20
box/ pack	250

Short bypass bend



Ø	20	25	32
box/ pack	160/ 20	100/ 20	120/ 10

Male threaded tee



Ø	20x1/2	20x3/4	25x1/2	25x3/4
box/ pack	80/ 20	60/ 20	50/ 10	40/ 10

Female threaded tee



Ø	20x1/2	20x3/4	25x1/2	25x3/4	32x1
box/ pack	100/ 20	100/ 20	60/ 20	40/ 10	20/ 10

Female threaded union



Ø	20x1/2	25x3/4	32x1	40x1 1/4	50x1 1/2	63x2
box/ pack	100/ 25	100/ 25	50/ 25	24/ 12	15	12/ 6

Male threaded union



Ø	20x1/2	25x3/4	32x1	40x1 1/4	50x1 1/2	63x2
box/ pack	100/ 25	80/ 20	50/ 25	24/ 12	15	12/ 6

Female threaded elbow 90°



Ø	20x1/2	20x3/4	25x1/2	25x3/4	32x1
box/ pack	100/ 25	100/ 25	60/ 20	60/ 20	30/ 15

Male threaded elbow 90°



Ø	20x1/2	20x3/4	25x1/2	25x3/4	32x1
box/ pack	100/ 25	100/ 25	60/ 20	60/ 20	30/ 15

Female threaded coupling



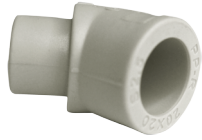
Ø	20x1/2	20x3/4	25x1/2	25x3/4	32x1	40x1 1/4	50x1 1/2	63x2
box/ pack	100/ 25	100/ 25	150/ 25	100/ 20	50/ 25	24/ 12	15	12/ 16

Male threaded coupling



Ø	20x1/2	20x3/4	25x1/2	25x3/4	32x1	40x1 1/4	50x1 1/2	63x2
box/ pack	100/ 25	100/ 25	150/ 25	100/ 20	50/ 25	24/ 12	15	12/ 16

Elbow 45° internal external



Ø	20	25
box/ pack	960/ 80	612/ 51

Reducing elbow



Ø	25x20	32x20	32x25
box/ pack	600/ 50	360/ 30	288/ 24

PP-RC filter B Type



Ø	20	25	32
box/ pack	150/25	90/15	48/8

PP-R Single union & female threaded



Ø	20x1/2	25x3/4	32x1
box/ pack	120	80	42

One-way valve-female



Ø	20	25
box/ pack	150/25	90/15

Female threaded coupling for gypsumwall mounting



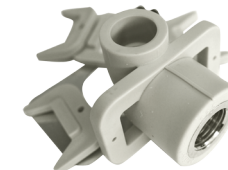
Ø	20x1/2
box/ pack	210/35

Threaded union with elbow (for water heater)



Ø	20x1/2	25x3/4	32x1
box/ pack	210/35	180/30	108/18

Elbow 90° for gypsumwall mounting



Ø	20
box/ pack	80

Elbow 90° for wall mounting female



Ø	20x1/2
box/ pack	162/27

Elbow 90° for wall mounting male



Ø	20x1/2
box/ pack	132/22

PP-R ball valve with brass ball



Ø	20	25	32	40	50	63
box/ pack	40	40	20	12	8	6

PPR Gate valve



Ø	20	25	32
box/ pack	91	64	48

Radiator stop valve with elbow



Ø	20x1/2	25x3/4
box/ pack	44	40

Threaded union



Ø	20	25	32
box/ pack	240/ 40	180/ 30	108/ 18

Long female threaded union



Ø	20x1/2	25x3/4	32x1
box/ pack	360/ 60	210/ 35	120/ 20

Long male threaded union



Ø	20x1/2	25x3/4	32x1
box/ pack	360/ 60	210/ 35	120/ 20

Plastic union



Ø	20x20	25x25	32x32	40x40	50x50	63x63
box/ pack	384/32	240/20	120/10	72/6	40/4	24/4

Binding



∅	32	50	110
---	----	----	-----

Coupling



∅	32	50	110
---	----	----	-----

The transition to cast iron/plastic



∅	50x72	110x124
---	-------	---------



The compensation pipe

∅	50	110
---	----	-----

Elbow



	15°	20°	22°	30°	45°	67°	90°
∅ (mm)	110	50	110	50 110	32 50 110	50 110	32 50 110

Reduction short



∅	110x50
---	--------

Reduction of long



∅	50x32	110x50
---	-------	--------

Reducingtee 45°



∅	110x50x110
---	------------

Reducingtee 90°



∅	110x50x110
---	------------

Equaltee 45°



∅	32	50	110
---	----	----	-----

Equaltee 90°



∅	32	50	110
---	----	----	-----

Revision



Ø	50	110
---	----	-----

Single-planecross



Ø	50x50x45°	110x110x45°	50x50x90°	110x110x90°
---	-----------	-------------	-----------	-------------

Reductionsingle-planecross



Ø	110x50x45°	110x50x90°
---	------------	------------

Cap



Ø	32	50	110
---	----	----	-----

Fungus



Ø	50	110
---	----	-----

Sewerpipes



Ø 32 mm	Ø 50 mm	Ø 110 mm
150	150	150
250	250	250
315	315	315
500	500	500
750	750	750
1000	1000	1000
1500	1500	1500
2000	2000	2000
3000	3000	3000



Types of radiators



Type 11: 1 convector, 1 panel, depth - 57mm



Type 22: 2 convectors, 2 panels, depth - 100mm

Characteristics of radiators Grandi Therm

Dimensions	
Height, mm	300/500/600
Length, mm	400-2000

Painting	
Colour	RAL9016 Traffic white
Painting technology	4-component protection Epoxy-polyester paint

Main characteristics	
Steel thickness	1.1
Convector steel thickness	0.4
Working pressure, Bar	8
Maximum pressure, Bar	13
Maximum operating temperature, °C	95

Connection	
Connection - side, inches	4xG 1/2"
Connection - bottom, inches	2xG 1/2"

Design ambient temperature taken at 2 °C.

Power is measured in watts (Vt) and is designed for the entire length of the radiator.

The heat output of the radiator increases linearly with the length of the product.

Heat output (for type 11, 22)

Width	t °C	Height					
		300		500		600	
		22	11	22	11	22	11
400	90/70 °C	480	275	772	459	900	538
	70/55 °C	380	218	496	297	576	347
500	90/70 °C	610	343	965	574	1125	673
	70/55 °C	480	273	620	371	720	434
600	90/70 °C	722	412	1158	688	1349	808
	70/55 °C	574	328	744	445	864	520
700	90/70 °C	851	480	1351	803	1574	942
	70/55 °C	672	382	868	519	1008	607
800	90/70 °C	960	549	1544	918	1799	1077
	70/55 °C	768	437	992	593	1151	694
900	90/70 °C	1093	618	1737	1032	2024	1211
	70/55 °C	868	491	1115	668	1295	781
1000	90/70 °C	1208	686	1930	1147	2249	1346
	70/55 °C	967	546	1239	742	1439	867
1100	90/70 °C	1331	755	2180	1261	2451	1480
	70/55 °C	1045	601	1351	814	1586	996
1200	90/70 °C	1450	824	2316	1376	2699	1615
	70/55 °C	1152	655	1487	890	1727	1041
1300	90/70 °C	1540	905	2509	1488	2841	1747
	70/55 °C	1210	708	1596	933	1871	1127
1400	90/70 °C	1695	961	2702	1606	3149	1884
	70/55 °C	1343	764	1735	1038	2015	1214
1500	90/70 °C	1790	1020	2856	1715	3310	2016
	70/55 °C	1421	802	1840	1106	2149	1300
1600	90/70 °C	1930	1098	3088	1835	3598	2154
	70/55 °C	1533	874	1983	1187	2303	1388
1800	90/70 °C	2179	1236	3474	2065	4048	2423
	70/55 °C	1726	983	2231	1335	2591	1561
2000	90/70 °C	2420	1373	3860	2294	4498	2692
	70/55 °C	1968	1097	2479	1483	2879	1735

PE-RT pipe with EVOH anti-diffusion layer



d.xs	packing bay
16x2.0	100 m
	160 m
	200 m
	240 m
	400 m

